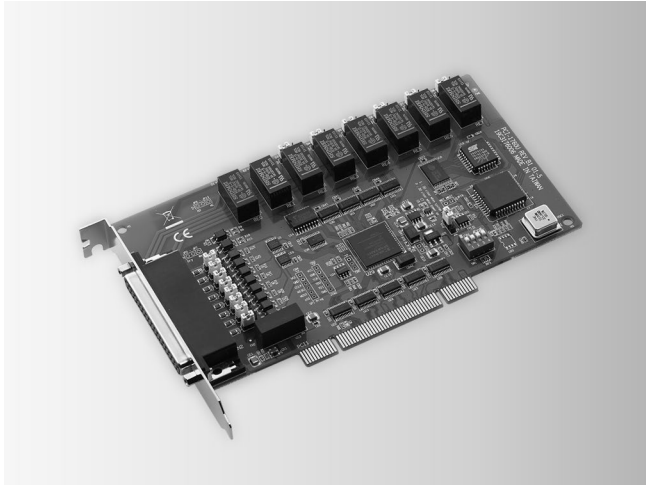


PCI-1760U

8-ch Relay and 8-ch Isolated Digital Input Universal PCI Card with 8-ch Counter/Timer



RoHS
COMPLIANT
2002/95/EC

FCC CE

Features

- 8 opto-isolated digital input channels
- 8 relay actuator output channels
- 2 opto-isolated PWM outputs
- LED indicators to show activated relays
- Jumper selectable dry contact/wet contact input signals
- Up event counters for DI
- Programmable digital filter function for DI
- Pattern match interrupt function for DI
- "Change of state" interrupt function for DI
- Universal PCI and BoardID switch

Introduction

PCI-1760U relay actuator and isolated digital input card is a PC add-on card for the PCI bus. It meets the PCI standard Rev. 2.2 (Universal PCI expansion card), and works with both 3.3 V and 5 V PCI slots. It provides 8 opto-isolated digital inputs with isolation protection of 2,500 V_{DC} for collecting digital inputs in noisy environments, 8 relay actuators that can be used as a on/off control devices or small power switches, and 2 isolated PWM (Pulse Width Modulation) outputs for custom applications.

For easy monitoring, each relay is equipped with one red LED to show its on/off status. Each isolated input supports both dry contact and wet contact so that it can easily interface with other devices when no voltage is present in the external circuit.

Specifications

Isolated Digital Input

- **Channels** 8
- **Input Voltage** Logic 0: 1.0 V max.
Logic 1: 4.5 V min. (12 V max.)
- **Interrupt Capable** Ch. 8 (IDI0 ~ IDI7)
- **Isolation Protection** 2,500 V_{DC}
- **Opto-Isolator Response** 100 μs
- **Input Resistance** 2 k Ohm @ 1/4 W

Counter/Timer

- **Channels** 8
- **Resolution** 16 bits
- **Compatibility** 5 V/TTL
- **Max. Input Frequency** 500 Hz
- **Isolation Protection** 2,500 V_{DC}
- **PWM Channels** 2
- **Digital Noise Filter** Min. effective high input period ≥ [(2 ~ 65535) x 5 ms] + 5 ms
Min. effective low input period ≥ [(2 ~ 65535) x 5 ms] + 5 ms

Relay Output

- **Channels** 8
- **Relay Type** 2 x Form C, and 6 x Form A
- **Contact Rating** 1 A @ 125 V_{AC}, 2 A @ 30 V_{DC}
- **Max. Switching Power** 125 VA, 60 W
- **Max. Switching Voltage** 250 V_{AC}, 220 V_{DC}
- **Max. Switching Current** 2 A
- **Operate/Release Time** max. 5 / 3.5 ms
- **Resistance** Contact: 50 mW max.
- **Life Expectancy (Electrical)** 3 x 10⁹ cycles min.: 2 A @ 30 V_{DC}, 1 A @ 125 V_{AC}
10⁶ cycles min.: 1 A @ 30 V_{DC}, 0.5 A @ 125 V_{AC}

General

- **Bus Type** Universal PCI V2.2
- **I/O Connectors** 1 x DB37 female connector
- **Dimensions (L x H)** 175 x 100 mm (6.9" x 3.9")
- **Power Consumption** Typical: 5 V @ 450 mA
Max.: 5 V @ 850 mA
- **Operating Temperature** 0 ~ 60°C (32 ~ 140°F)
- **Storage Temperature** -20 ~ 70°C (-4 ~ 158°F)
- **Storage Humidity** 5 ~ 95 % RH, non-condensing

Ordering Information

- **PCI-1760U** 8-ch Relay/IDI PCI Card w/ 8-ch Counter/Timer

Accessories

- **PCL-10137-1E** DB37 Cable, 1 m
- **PCL-10137-2E** DB37 Cable, 2 m
- **PCL-10137-3E** DB37 Cable, 3 m
- **ADAM-3937** DB37 DIN-rail Wiring Board

KOLBINGER - PCQT - +43 2239 3160

AT-2384 Breitenfurt/Vienna, Hauptstrasse 93, office@kolbinger.at , www.pcqt.at