

ADAM-5060

ADAM-5068

ADAM-5069

6-ch Relay Output Module

8-ch Relay Output Module

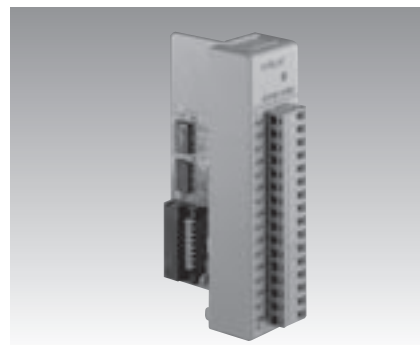
8-ch Power Relay Output Module w/LED



ADAM-5060



ADAM-5068



ADAM-5069



Specifications

General

- **Certifications** CE
FM (ADAM-5060 only)
- **Connectors** 1 x Plug-in screw terminal (# 14-22 AWG)
- **Power Consumption** 1.8 W (max.)

Relay Output

- **Breakdown Voltage** 500 V_{AC} (50/60 Hz)
- **Channels** 2 x form A, 4 x form C
- **Contact Rating** AC: 125 V @ 0.6 A
250 V @ 0.3 A
DC: 30 V @ 2 A
110 V @ 0.6 A
- **Insulation Resistance** 1 GΩ min. @ 500 V_{DC}
- **Relay Off Time (typical)** 2 ms
- **Relay On Time (typical)** 3 ms
- **Total Switching Time** 10 ms

Ordering Information

- **ADAM-5060** 6-ch Relay Output Module

Specifications

General

- **Certifications** CE
FM (ADAM-5060 only)
- **Connectors** 1 x Plug-in screw terminal (# 14-22 AWG)
- **Power Consumption** 1.8 W (max.)

Relay Output

- **Breakdown Voltage** 500 V_{AC} (50/60 Hz)
- **Channels** 8 x form A
- **Contact Rating** AC: 120 V @ 0.5 A
DC: 30 V @ 1 A
- **Insulation Resistance** 1 GΩ min. @ 500 V_{DC}
- **Relay Off Time (typical)** 3 ms
- **Relay On Time (typical)** 7 ms
- **Total Switching Time** 10 ms

Ordering Information

- **ADAM-5068** 8-ch Relay Output Module

Specifications

General

- **Certifications** CE, FCC class A
- **Connectors** 1 x Plug-in screw terminal (# 14-22 AWG)
- **LED Indicator** On: Active
Off: Non-active
- **Power Consumption** 2.2 W (max.)

Relay Output

- **Breakdown Voltage** 750 V_{AC} (50/60 Hz)
- **Channels** 8 x form A
- **Contact Rating** AC: 250 V @ 5 A
DC: 30 V @ 5 A
- **Insulation Resistance** 1 GΩ @ 500 V_{DC}
- **Relay On Time** 5 ms
- **Relay Off Time** 5.6 ms

Ordering Information

- **ADAM-5069** 8-ch Power Relay Output Module w/LED