

FPM-3191G

9U Rackmount 19" SXGA Industrial Monitor with Resistive Touchscreen, Direct-VGA and DVI Ports



Features

- 19" SXGA TFT LCD with LED backlight
- Robust design with stainless steel chassis and aluminum front panel
- Anti-reflective screen with tempered glass
- OSD control pad on front panel
- Supports industrial 24 V_{DC} power input
- Supports panel, wall, desktop, rack or VESA arm mounting
- Front panel is IP65 compliant
- Supports 9U pre-drill Rackmount mounting hole

Introduction

FPM-3191G is a 19" color TFT LCD flat panel monitor specifically designed for industrial applications. With a viewing size as large as 19", it presents a simple display area as well as vivid and sharp images for your HMI. It features direct VGA signal transmission. You can thus upgrade the displays without making changes to the existing system. The onscreen display function also makes it easy to adjust the images on the screen. The whole chassis is designed in stainless steel and the front panel is made of aluminum with front panel IP65 compliance.

Specifications

General

- **Button Controls** OSD (Onscreen Display) control pad on front panel
 - **Certification** BSMI, CCC, CE, FCC Class A, UL
 - **Dimensions (W x H x D)** 482mm x 399mm x 67 mm (19" x 15.7" x 2.64")
 - **Enclosure** Front panel: Aluminum with coating
Rear cover: Stainless steel chassis
- *Mounting holes on rear cover are designed for PWR-246E DC Source
- **Mounting** Panel, wall, desktop, VESA arm & 19" rackmount
 - **Power Input** Phoenix Jack: 24 V_{DC} input
DC Jack: external 57 W power adapter, with 100 ~ 240 V_{AC} input and 12 V_{DC} @ 4.75 A output

Note: AC power adapter is included.

- **Power Consumption** 35 W + 20%
- **Video Port** VGA & DVI-D port
- **Weight (Net)** 10.65 kg (23.46 lbs)

LCD Display

- **Display Type** SXGA TFT LCD with LED backlight
- **Display Size** 19"
- **Max. Resolution** 1280 x 1024
- **Max. Color** 16.2 M
- **Viewing Angle (H/V°)** 170/160
- **Luminance (cd/m²)** 350
- **Backlight Life (hrs)** 50,000
- **Contrast Ratio** 1000:1

Touchscreen (Optional)

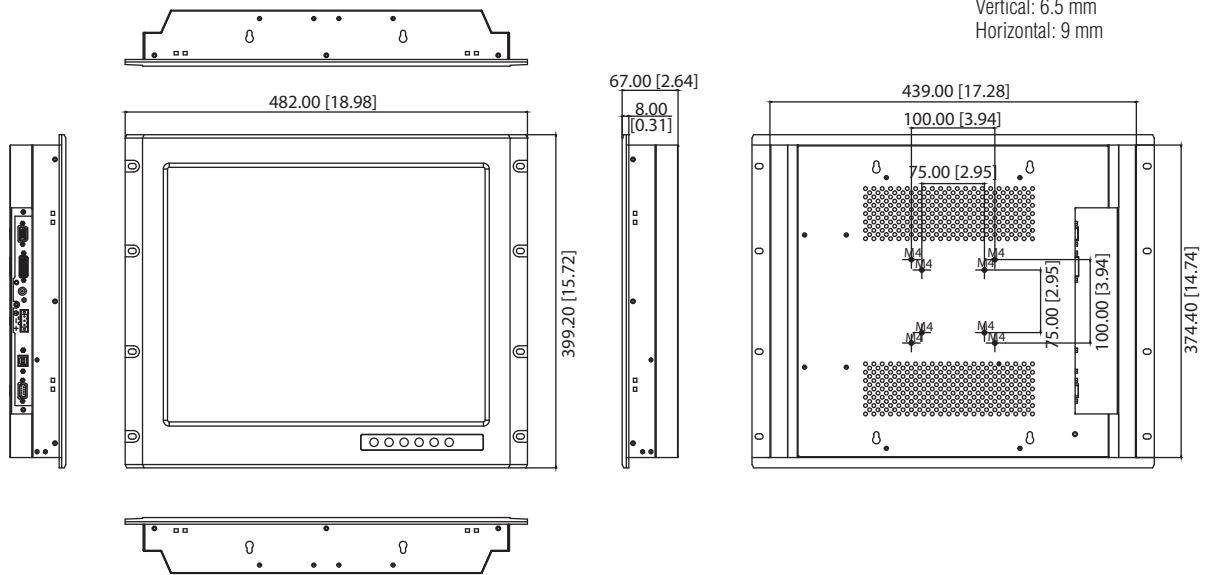
- **Type** 5-wire Resistive
- **Interface** RS-232 and USB
- **Lifespan** 35 million touches at a single point
- **Light Transmission** 80% ±5
- **OS Support** Windows XP, Vista, 7, XPe, CE and Linux
- **Power Consumption** +5 V @ 100 mA
- **Touch Resolution** Linearity

Environment

- **Operation Temperature** 0 ~ 50°C (32 ~ 122°F)
- **Storage Temperature** -20 ~ 60°C (-4 ~ 140°F)
- **Humidity (Storage)** 10 ~ 90% non-condensing
- **Waterproof** Front panel is IP65 compliant
- **Vibration** 5 ~ 500 Hz, 1 Grms (Operating, Random)

Dimensions

Unit: [mm]



Panel Cut-out Dimensions: 444mm [17.48"] X 376.4 mm [14.82"]

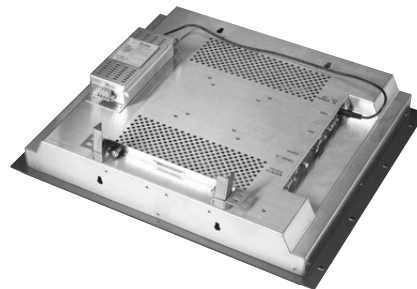
Ordering Information

- **FPM-3191G-X0AE** 19" SXGA Ind. Monitor with VGA, DVI
- **FPM-3191G-R3AE** 19" SXGA Ind. Monitor w/ Resistive TS(Combo)

Accessories

- **PWR-246E** Ind. DC to DC w/24-48 V_{DC} 1.4-2.9A In 12 V_{DC} 5A Out
- **1702002600** Power Cable US Plug 1.8 M
- **1702002605** Power Cable EU Plug 1.8 M
- **1702031801** Power Cable UK Plug 1.8 M
- **1702031836** Power Cable China/Australia Plug 1.8 M

Mounting with DC Source



I/O View

