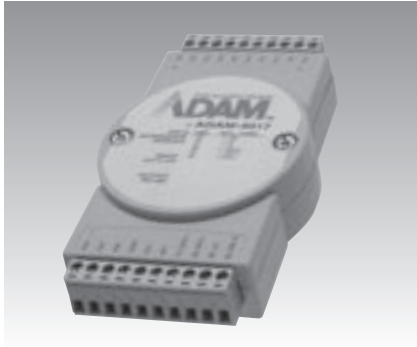


# ADAM-4017/4017+ ADAM-4018/4018+ ADAM-4019+

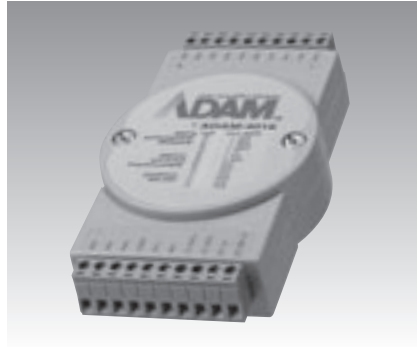
8-ch Analog Input Modules with Modbus®

8-ch Thermocouple Input Modules with Modbus

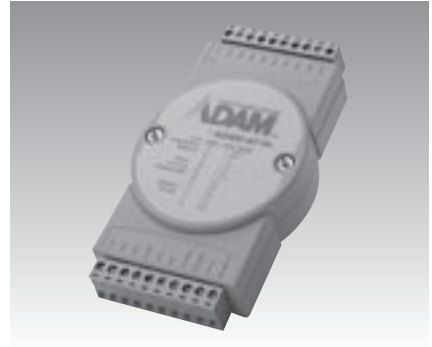
8-ch Universal Analog Input Module with Modbus



ADAM-4017/4017+ CE FCC



ADAM-4018/4018+ CE FCC



ADAM-4019+ CE FCC

## Specifications

### General

- Power Consumption 1.2 W @ 24 V<sub>DC</sub>
- Watchdog Timer ADAM-4017: System (1.6 second)  
ADAM-4017+: System (1.6 second) & Communication
- Support Protocol ASCII command (ADAM-4017)  
ASCII command and Modbus/RTU (ADAM-4017+)

### Analog Input

- Channels ADAM-4017: 6 differential, and 2 single-ended  
ADAM-4017+: 8 differential
- Channel Independent Configuration ADAM-4017+ only
- Input Impedance Voltage: 20 MΩ  
Current: 120 Ω (4017+ only)
- Input Type mV, V, mA
- Input Range ADAM-4017: ±150 mV, ±500 mV, ±1 V, ±5 V, ±10 V, ±20 mA  
ADAM-4017+: ±150 mV, ±500 mV, ±1 V, ±5 V, ±10 V, ±20 mA, 4 ~ 20 mA

## Specifications

### General

- Power Consumption 0.8 W @ 24 V<sub>DC</sub>
- Watchdog Timer ADAM-4018: System (1.6 second)  
ADAM-4018+: System (1.6 second) & Communication
- Support Protocol ASCII command (ADAM-4018)  
ASCII command and Modbus/RTU (ADAM-4018+)

### Analog Input

- Channels ADAM-4018: 6 differential, and 2 single-ended  
ADAM-4018+: 8 differential  
ADAM-4018+ only
- Channel Independent Configuration
- Input Impedance Voltage: 20 MΩ  
Current: 120 Ω (4018+ only)
- Input Type ADAM-4018: Thermocouple, mV, V, mA  
ADAM-4018+: Thermocouple, mA
- Voltage/Current Input Range ADAM-4018 ±15 mV, ±50 mV, ±100 mV, ±500 mV, ±1 V, ±2.5 V, ±20 mA  
ADAM-4018+: ±20 mA, 4 ~ 20 mA
- T/C Types and Temperature Ranges
 

|   |               |   |               |
|---|---------------|---|---------------|
| J | 0 ~ 760 °C    | R | 500 ~ 1750 °C |
| K | 0 ~ 1370 °C   | S | 500 ~ 1750 °C |
| T | -100 ~ 400 °C | B | 500 ~ 1800 °C |
| E | 0 ~ 1000 °C   |   |               |
- Burn-out Detection All T/C (ADAM-4018+ only)

## Specifications

### General

- Power Consumption 1.0 W @ 24 V<sub>DC</sub>
- Watchdog Timer System (1.6 second) & Communication
- Support Protocol ASCII command and Modbus/RTU

### Analog Input

- Channels 8 differential channels for individual input type  
Yes
- Channel Independent Configuration
- Input Impedance Voltage: 20 MΩ  
Current: 120 Ω
- Input Type T/C, mV, V, mA
- Voltage/Current Input Range ±1 V, ±2.5 V, ±5 V, ±10 V, ±100 mV, ±500 mV, ±20 mA, 4 ~ 20 mA
- T/C Types and Temperature Ranges
 

|   |               |   |               |
|---|---------------|---|---------------|
| J | 0 ~ 760 °C    | R | 500 ~ 1750 °C |
| K | 0 ~ 1370 °C   | S | 500 ~ 1750 °C |
| T | -100 ~ 400 °C | B | 500 ~ 1800 °C |
| E | 0 ~ 1000 °C   |   |               |
- Burn-out Detection 4 ~ 20 mA & all T/C

## Common Specifications

### General

- Power Input Unregulated 10 ~ 30 V<sub>DC</sub>
- Connectors 2 x Plug-in terminal block (#14 ~ 22 AWG)

### Analog Input

- Accuracy Voltage mode: ±0.1% or better  
Current mode: ±0.2% or better
- Resolution 16-bit
- Sampling Rate 10 sample/second (total)

- Isolation Voltage 3000 V<sub>DC</sub>
- Overvoltage Protection ±35 V<sub>DC</sub>
- CMR @ 50/60 Hz 120 dB
- NMR @ 50/60 Hz 100 dB
- Span Drift ±25 ppm/°C
- Zero Drift ±6 μV/°C
- Built-in TVS/ESD Protection

### Environment

- Humidity 5 ~ 95% RH
- Operating Temperature -10 ~ 70 °C (14 ~ 158 °F)
- Storage Temperature -25 ~ 85 °C (-13 ~ 185 °F)

## Ordering Information

- ADAM-4017 8-ch Analog Input Module
- ADAM-4017+ 8-ch Analog Input Module with Modbus
- ADAM-4018 8-ch Thermocouple Input Module
- ADAM-4018+ 8-ch Thermocouple Input Module with Modbus
- ADAM-4019+ 8-ch Universal Analog Input Module with Modbus